

## Black Plate

(# 33196/33296/33396)

### 1. Description

SPL Black Plate has low auto-fluorescence with efficient light blocking ability to obtain most accurate result in fluorescence experiments. Also, microscopic observation can be done simultaneously with fluorescence experiment due to its highly transparent bottom.

#### Surface materials for Black Plates

**Glass:** naturally charged, good growth surface for adherent cells

**FLux:** surface modified plastic film (188 µm thick), optimal for confocal microscopy

**PS:** thinner than existing PS plate, good for cell attachment and microscopic observation.

### 2. Features

- ❖ Black Wall/Clear Bottom
- ❖ Bottom materials: Glass or FLux or PS
- ❖ Designed to prevent cross contamination
- ❖ Effective gas exchange lid inner design
- ❖ Alphanumeric labeling
- ❖ Individual packaging in plastic tray (Cat.No. 33196/33296)

### 3. Functional Test

Sterility	:	Passed
Non-Cytotoxic	:	Passed
Non-Pyrogenic	:	Passed
DNase / RNase free	:	Passed
DNA free	:	Passed

### 4. Product Range

Cat. No.	Material (Plate/Bottom)	Bottom Type	External Dimension (mm)	Well Dimension d x h (mm)	Growth Area (cm <sup>2</sup> )	Working Volume (ml)	Surface Treatment	Sterile	Packaging
33196	PS / Glass	Flat	85.40 x 127.60 x 14.40	6.50 x 10.80	0.33	0.20	-	+	1 / 20
33296	PS / FLux	Flat	85.40 x 127.60 x 14.40	6.50 x 10.80	0.33	0.20	+	+	1 / 20
33396	PS / PS	Flat	85.40 x 127.60 x 14.40	6.50 x 10.80	0.33	0.20	+	+	5 / 25

### 5. Certification

SPL Life Sciences hereby certifies that the product identified above, inspected to be in compliance with product quality specification and requirements as documented in our ISO 9001:2008 Quality Management System (K-QA-Q031478) in Korea.

### 6. Product Photographs



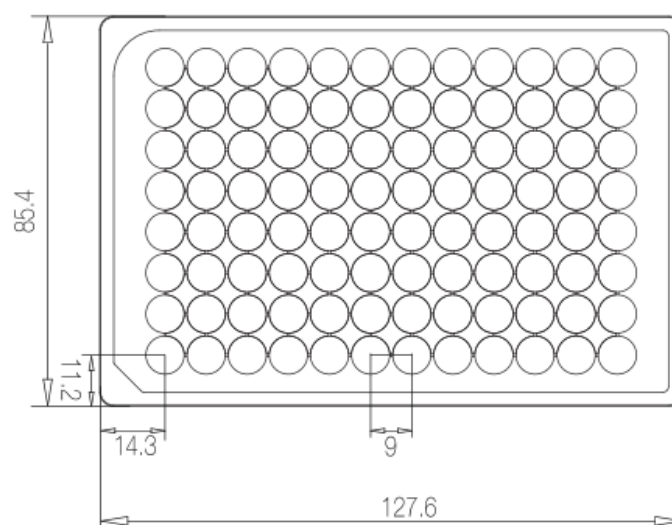
## 7. Specifications & Technical Drawing

### - Specifications

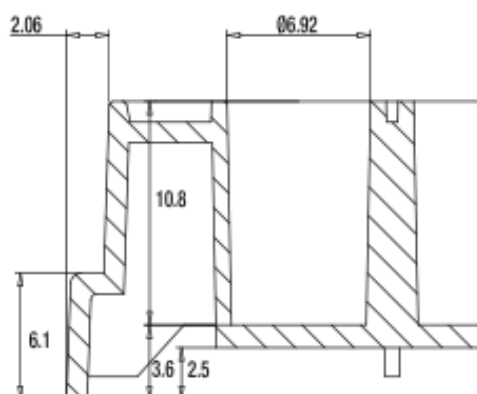
Dimensions				Material (Resin)	Packaging
Lid		Plate			
Length:	127.10 mm	Length:	127.60 mm	Plate: Crystal-grade polystyrene (PS) Bottom: Glass(33196), FLux(33296), PS Film (33396)	▪ Pieces/Sleeve: 1 ▪ Pieces/Case: 20
Width:	84.90 mm	Width:	85.40 mm		
Height:	10.00 mm	Height:	20.20 mm		
		Well Dimension:	6.40 mm		
Volume per Well:		0.20 ml			
Growth Area:		0.32 cm <sup>2</sup>			

### - Technical Drawing

Plate



Flat Bottom



[www.spllifesciences.com](http://www.spllifesciences.com)

For technical assistance, contact SPL R&D Center at:

Tel: +82-31-533-4800; Fax: +82-31-533-1430; e-mail: [spl@ispl.co.kr](mailto:spl@ispl.co.kr)

To place an order, contact your local distributor or

Tel: +82-31-533-4800; Fax: +82-31-533-1430; e-mail: [business@ispl.co.kr](mailto:business@ispl.co.kr)